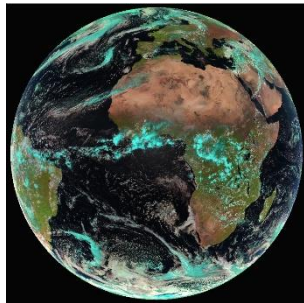


# Regional Training Centre

PRETORIA

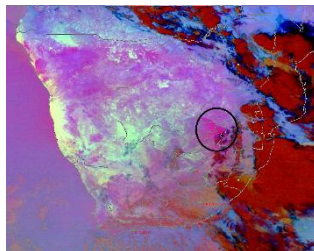


## Basic Satellite Image Interpretation

### Interpret, analyse and manipulate Meteorological Satellite Data

- Identify various weather systems by using satellite imagery
- Identify potentially hazardous weather by using satellite imagery
- Create your own single channel imagery
- Create your own RGB combinations

**Pre-requisite requirement is a strong Meteorological background with English proficiency**



Bloemfontein Dust Storm 16 October 2014.  
Copyright (2014) EUMETSAT

### Identify basic cloud types using Meteorological satellite data

#### Convective cloud types are identified by using single channels and RGB's

Cumulus, Cumulonimbus and altocumulus cloud are identified by using single channels and RGB combinations

#### Stratiform cloud types are identified by using single channels and RGB's

Stratus (Fog), stratocumulus, altocumulus and Cirrus cloud are identified by using single channels and RGB's

#### Clouds at various heights in the atmosphere are identified by using single channels and RGB combinations

Low, middle and high cloud are identified and distinguished between by using single channels and RGB combinations

### Contact Details

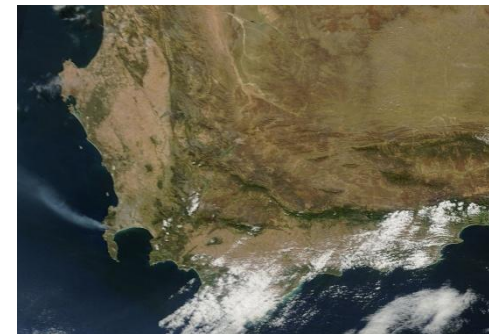
#### REGIONAL TRAINING CENTRE

**Web:** [www.weathersa.co.za](http://www.weathersa.co.za)  
**E-mail** [met.training@weathersa.co.za](mailto:met.training@weathersa.co.za)  
**Phone** +27 12 367 6000

### Access Meteorological Satellite data

The registration process on the Eumetsat web page is explained and demonstrated on how to gain access to raw satellite data for download and shipping.

Various data ordering methods, data types and data formats are explored and explained.



Cape Town fires 1 March 2015:  
Copyright (2015) MODIS terra (250m).

**When making enquiries regarding this course that is offered through the South African Weather Service, please quote the following reference number:-**

**RTC-SAT-2016**